

## Teacher notes

# Year 2: Term 2 – Family

### Unit overview and guidance

Introduce the theme – explore the word ‘family’

- Discuss what the word family means to the pupils.
- Can pupils give examples of stories about families? Or examples of famous families?

Exploring Non-fiction – Text: Talent in the House by Ross Montgomery

- See separate lesson notes



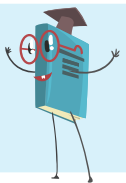
Exploring Fiction – Text: A Very Inventive Family by Ross Montgomery

- See separate lesson notes



Exploring Poetry – Text: Families by Sue Hardy-Dawson

- See separate lesson notes



Pulling it all together – explore the theme of families

*Discuss the questions below, exploring the theme of families with the pupils.*

- Imagine the *Families* poem, *Talent in the House* and *A Very Inventive Family* collected together under one title.

The title of the collection is \_\_\_\_\_ Families.

What word or words would you use in front of Families?

- What would Anita from *A Very Inventive Family* say if she read the *Families* poem? Would she agree with some bits more than others?

- Imagine a conversation between Anita from *A Very Inventive Family* and Sheku from *Talent in the House*. What would they say about their families? And what would you say to each of them?